

“Green Growth of Regional Economy, High Tech Development and Job Creation: the case of the Dutch Waddensea region”

Presentation Plenary Round Table Session, Pacific Regional Science Conference, Seoul, Korea, July 4, 2011

Jouke van Dijk

Board Member Waddenacademy

Professor of Regional Labour Market Analysis

Faculty of Spatial Sciences, University of Groningen

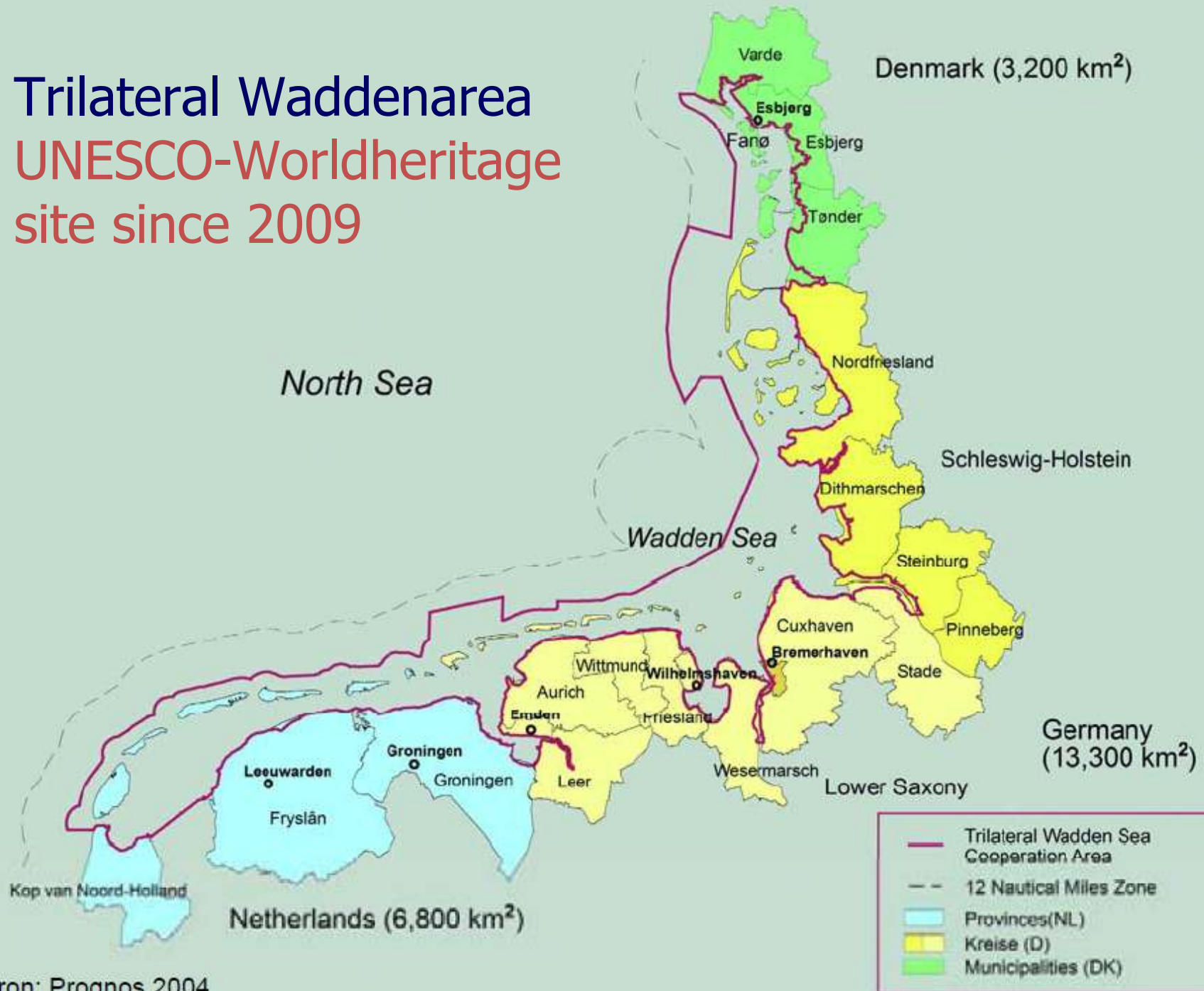
jouke.van.dijk@rug.nl

www.joukevandijk.nl

Where is the Wadden area?



Trilateral Waddenarea UNESCO-Worldheritage site since 2009







Tourism



Extraction of natural gas



Ameland, gaswinstation Ameland-Oost-1 van de NAM op de oostpunt van Ameland met daarachter natuurgebied De Hon. Samen met twee boorplatforms in de Noordzee wordt hier circa 700 miljoen kubieke meter aardgas per jaar geproduceerd. Dit is ruim voldoende om alle huishoudens in de provincie Friesland van aardgas te voorzien
15 april 2010



Gasboorplatform Ameland-Westgat-1 in de Noordzee ten noorden van Ameland 28 juli 2009



Boorplatform Ameland-Oost-2 in de Noordzee ten noorden van Ameland 28 Juli 2009

Construction of three new powerplants in Eemshaven and more in Germany



The Waddensea Region:

located central in Europe, but lower income, higher unemployment and facing population decline; higher educated young people leave
EXPLICIT POLICY GOAL: sustainable future for nature AND the inhabitants

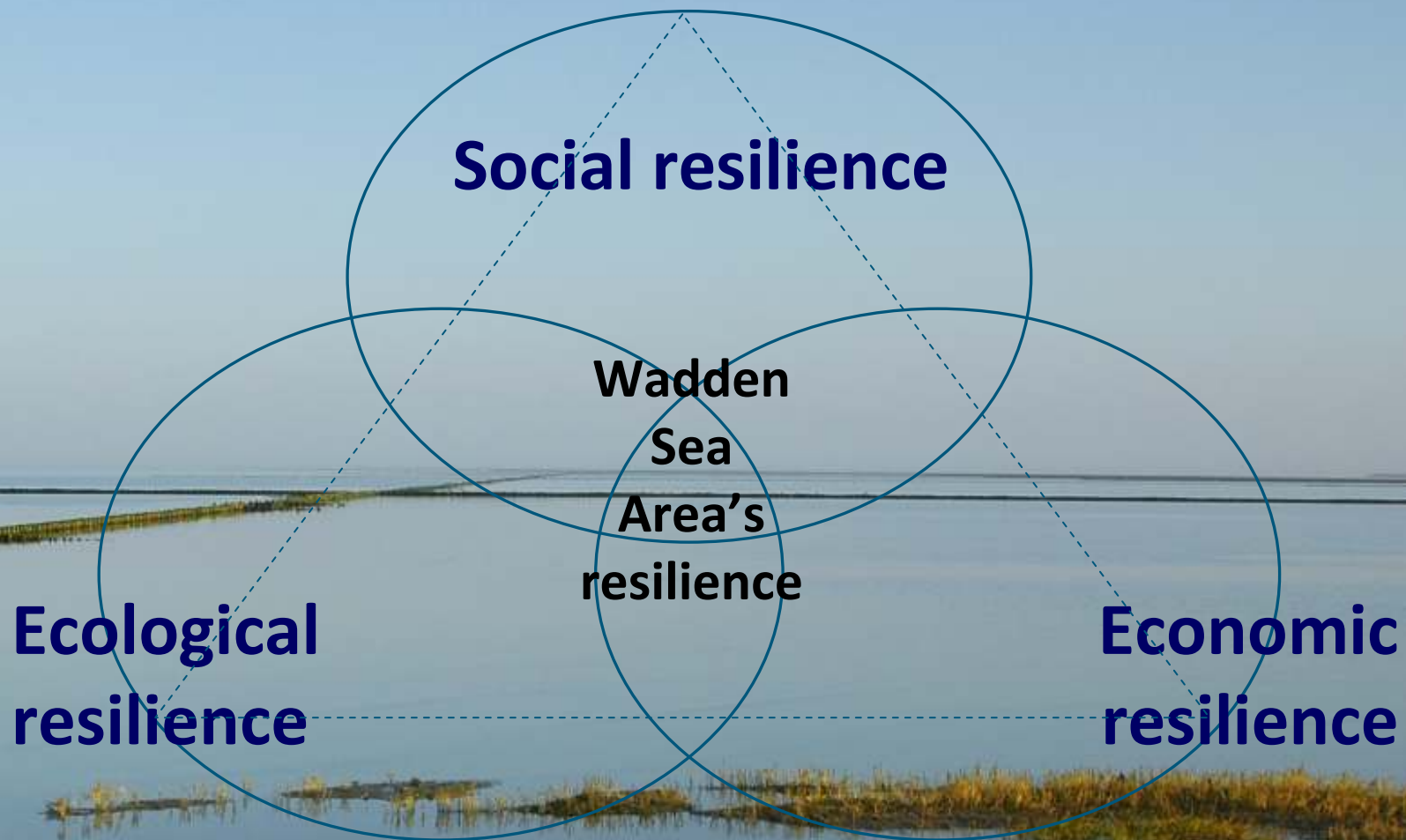
→ green growth strategy!?!?

- * Nature is an important asset for tourism
- * Focus on energy:
natural gas extraction, new powerplants,
solar and wind energy: how many jobs?

Problems

- Tourism may disturb birds, landscape
- Natural gas extraction: risk of blow-out, lowers seabottom level
- Wind energy: noise and horizon pollution, killing of birds
- New powerplants require dredging for coal and bio-mass transport; coolingwater intake destroys juvenile fish, CO2-emission; not many jobs created
- Global warming, sealevel rise: wetland disappears over 100 – 150 years

Resilience of the Wadden Sea Area



Important research questions (1)

- **Safety:** how can the safety of the Wadden Sea Region and its population be guaranteed in the long-term, also taking into account the possible harmful effects of climate change?
- **Climate-neutral:** how can a sustainable energy balance for the region be realised?
- **Protection:** how can the natural values be safeguarded?
- **Development:** which regional economic developments are possible within the constraints?



Important research questions (2)

- **Adaptation:** how will the natural environment adapt to climate change, the introduction of invasive species, changes in the global economy?
- **Sustainable economy:** how can work and income for the residents be guaranteed in a sustainable manner?
- **Liveable community and quality landscape:** how can social cohesion, a recognisable man-made landscape and living heritage be safeguarded?

→ **New research institute of the Royal Dutch Academy of Sciences: Waddenacademy**
For more information: www.waddenacademie.nl

Waddenacademy promotes integrated multi-disciplinary research in a system approach

Geoscience



Ecology



Society and cultural history



Social and spatial Economics & planning



Climate and water



Green growth strategy requires integrated research

- it combines **two or more disciplines** with the emphasis on feedbacks and interactions;
- it focuses attention on the **interactions between space and time scales**;
- it focuses attention on the **accumulation of processes**, interventions and effects;
- it is based on the **co-production of knowledge** in which knowledge demands are generated, knowledge is used and generated in close interaction between scientists, practitioners and policymakers (**engaged scholarship**)

“Green Growth of Regional Economy, High Tech Development and Job Creation: the case of the Dutch Waddensea region”

Presentation Plenary Round Table Session, Pacific Regional Science Conference, Seoul, Korea, July 4, 2011

Jouke van Dijk

Board Member Waddenacademy

Professor of Regional Labour Market Analysis

Faculty of Spatial Sciences, University of Groningen

jouke.van.dijk@rug.nl

www.joukevandijk.nl