

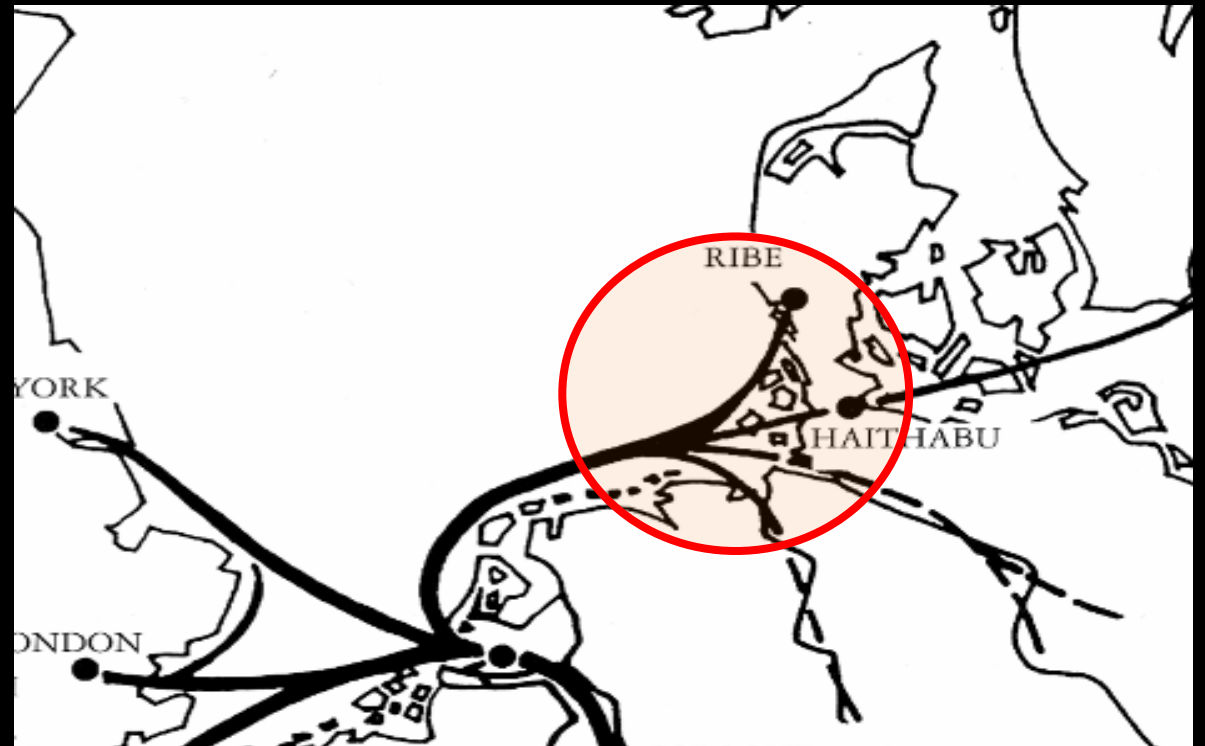
Between Groothusen and Ribe

Key sites of early-medieval Wadden sea trade in the light of current research

Martin Segschneider, Wilhelmshaven & Morten Søvsø, Ribe

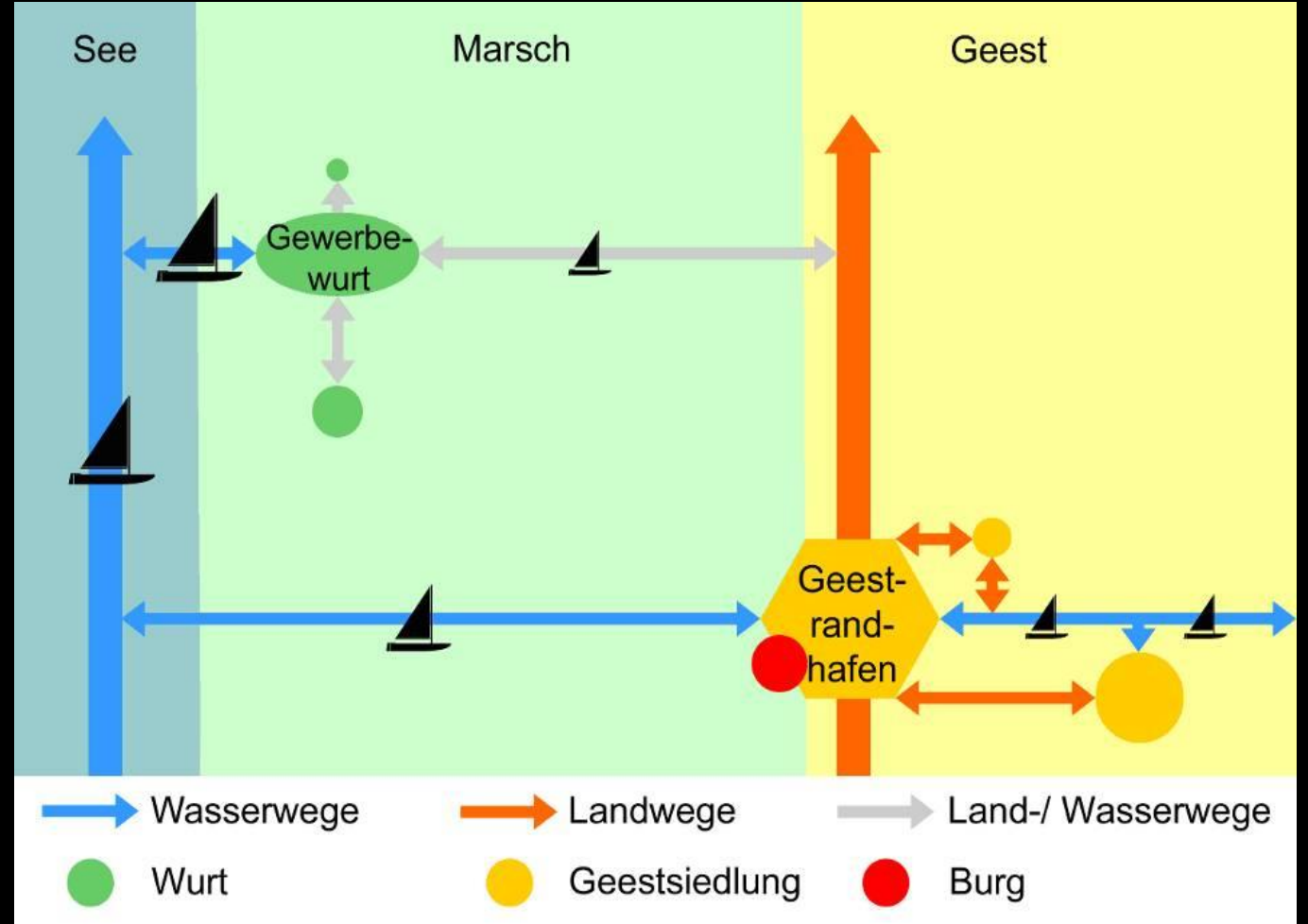


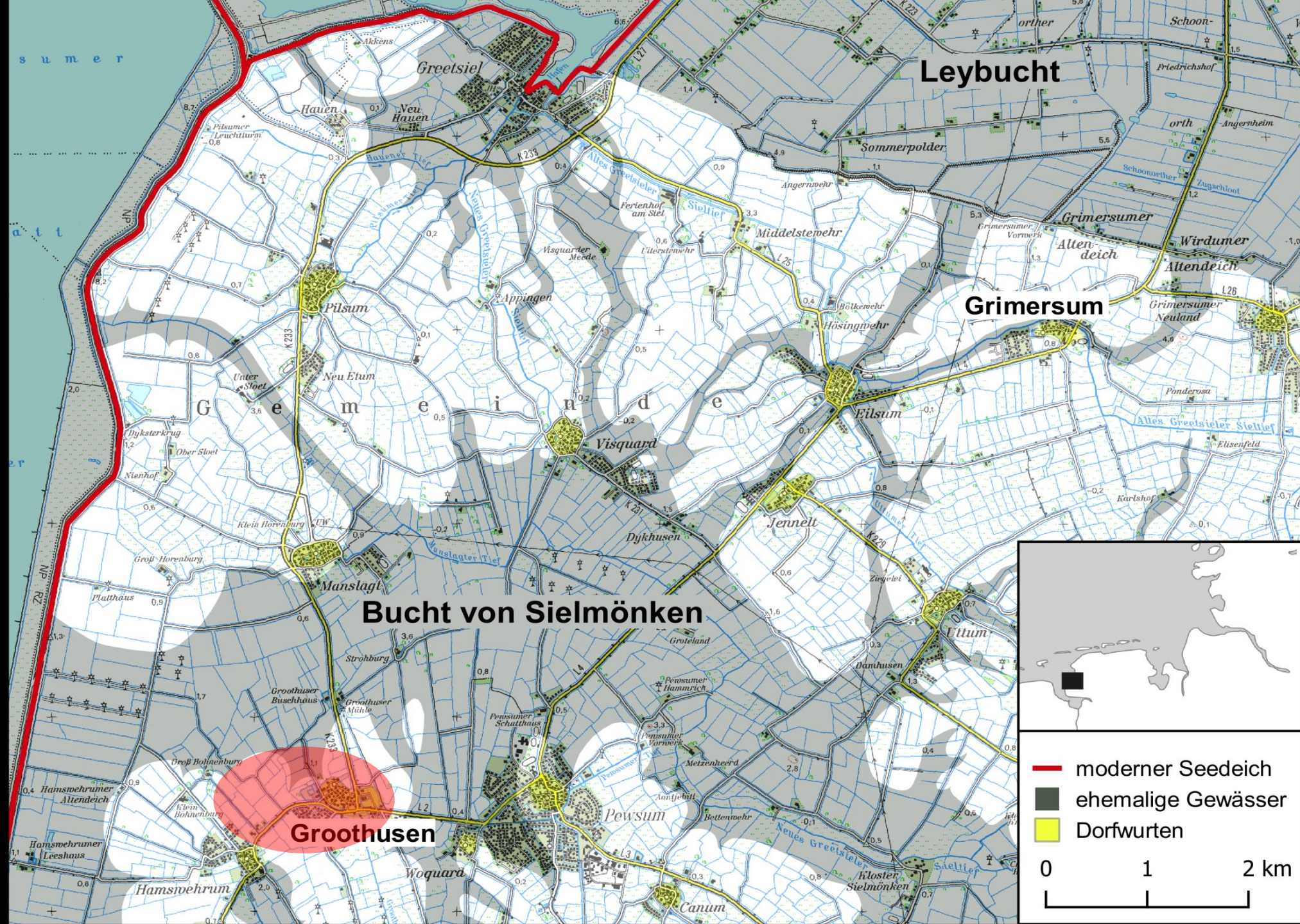
DFG
Schwerpunktprogramm 1630

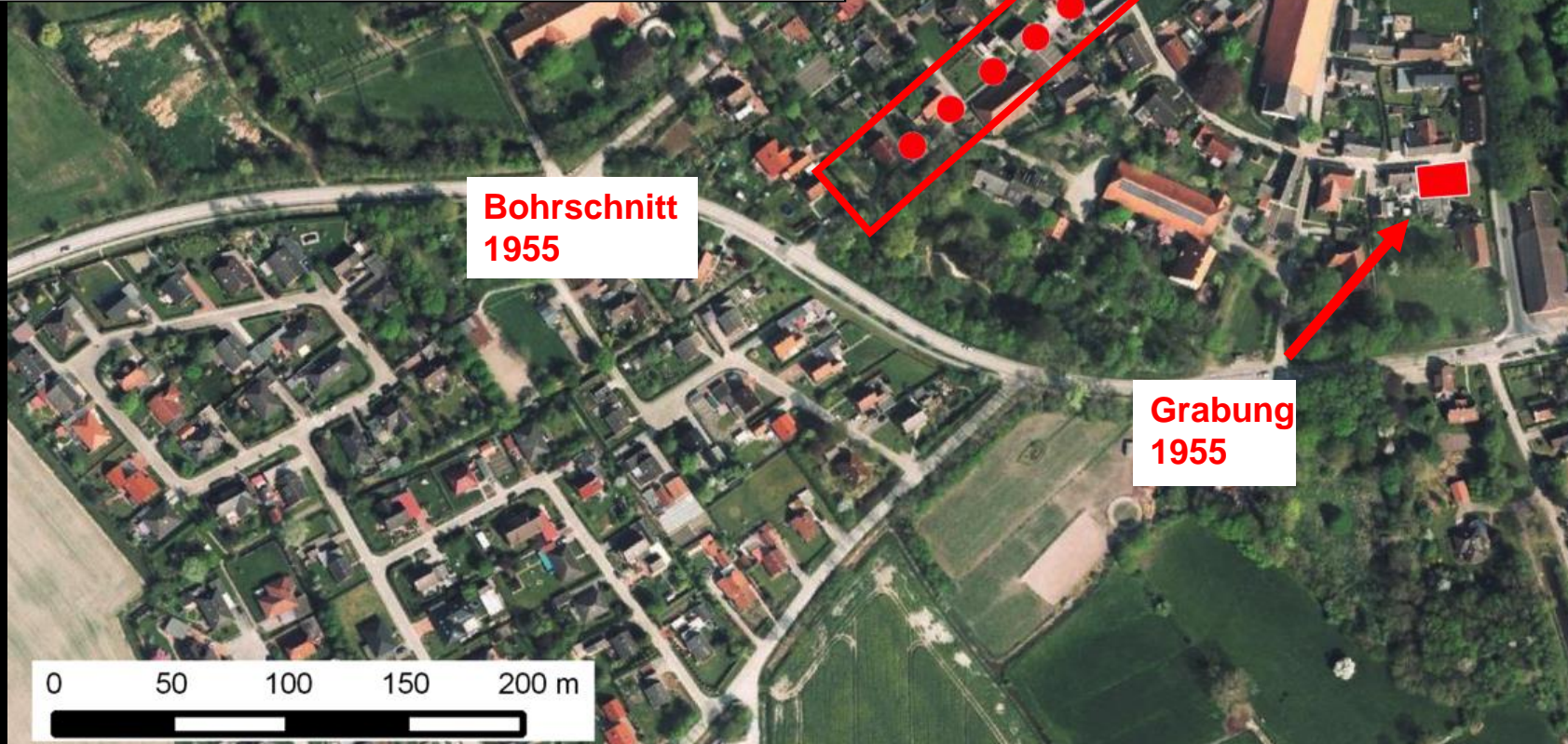
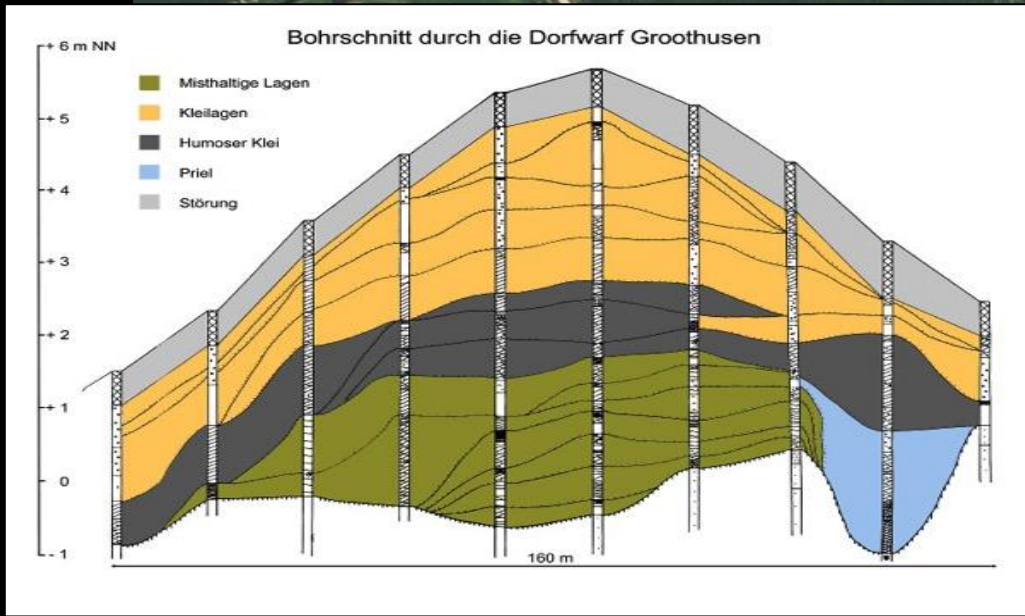


DFG SPP Harbours

„Trading-terps and Geest boundary harbours – medieval trade ports on the German North Sea coast“







Reliefbandamphore Badorfer Ware aus Groothusen, Ldkr. Aurich. Foto: R. Kiepe, NihK.

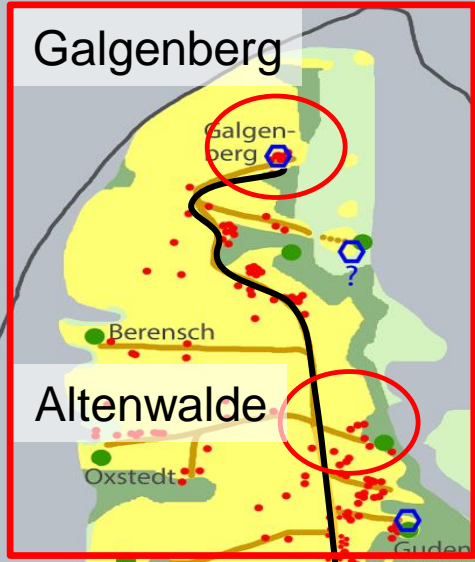


Überreste kleiner Häuser in Stabbauweise.

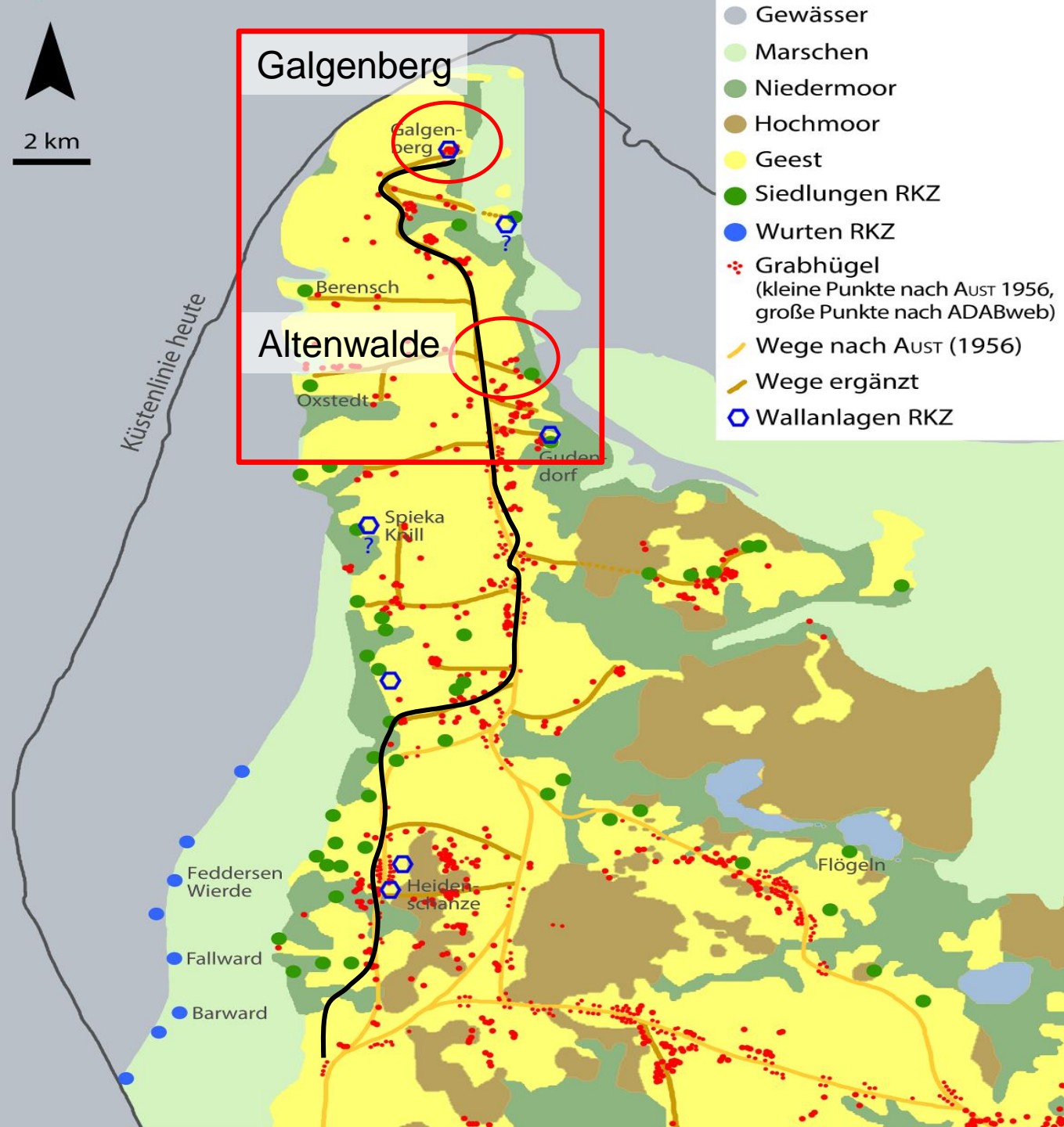




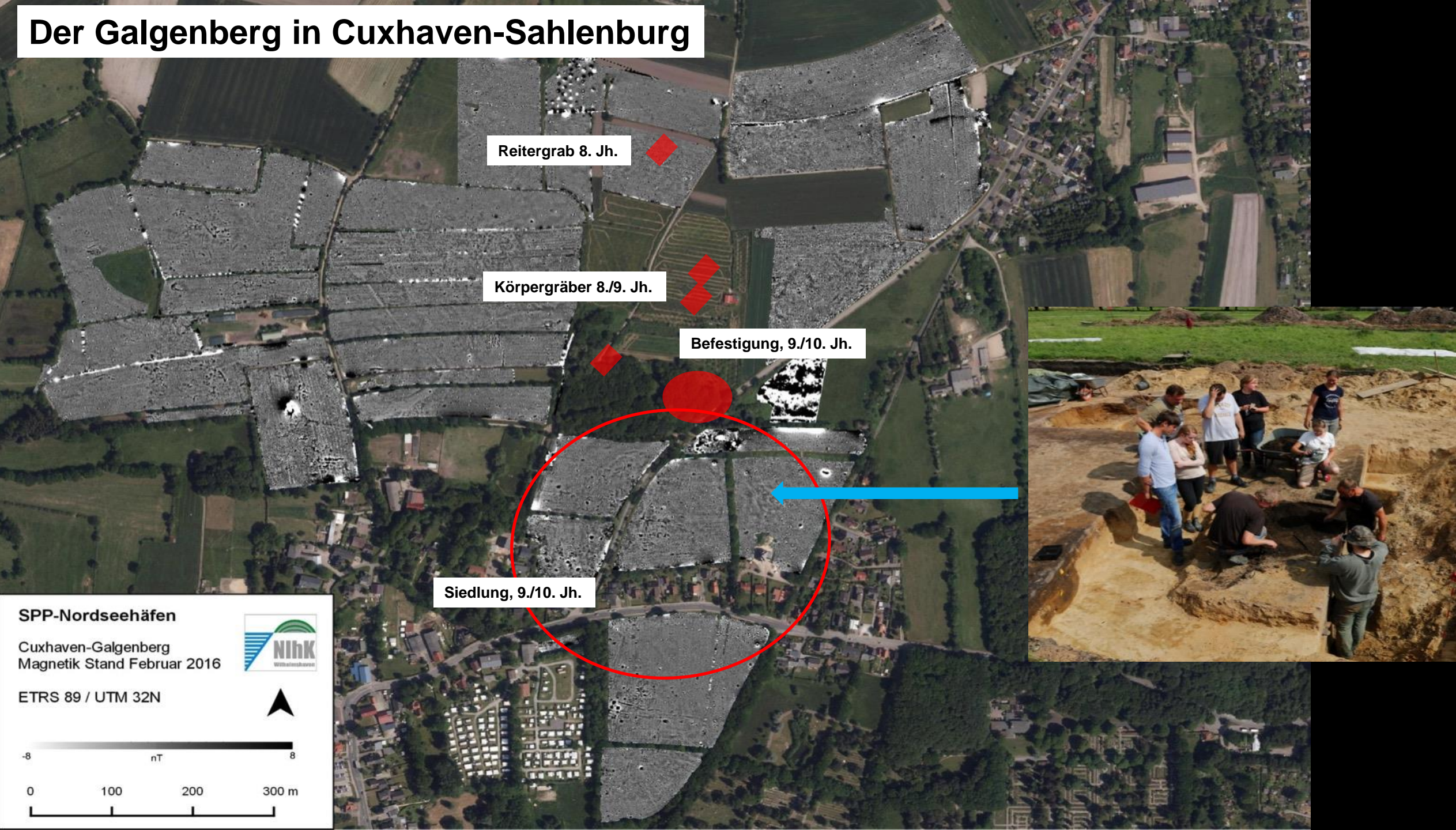
Küstenlinie heute



- Gewässer
- Marschen
- Niedermoor
- Hochmoor
- Geest
- Siedlungen RKZ
- Wurten RKZ
- Grabhügel
(kleine Punkte nach AUST 1956,
große Punkte nach ADABweb)
- Wege nach AUST (1956)
- Wege ergänzt
- Wallanlagen RKZ

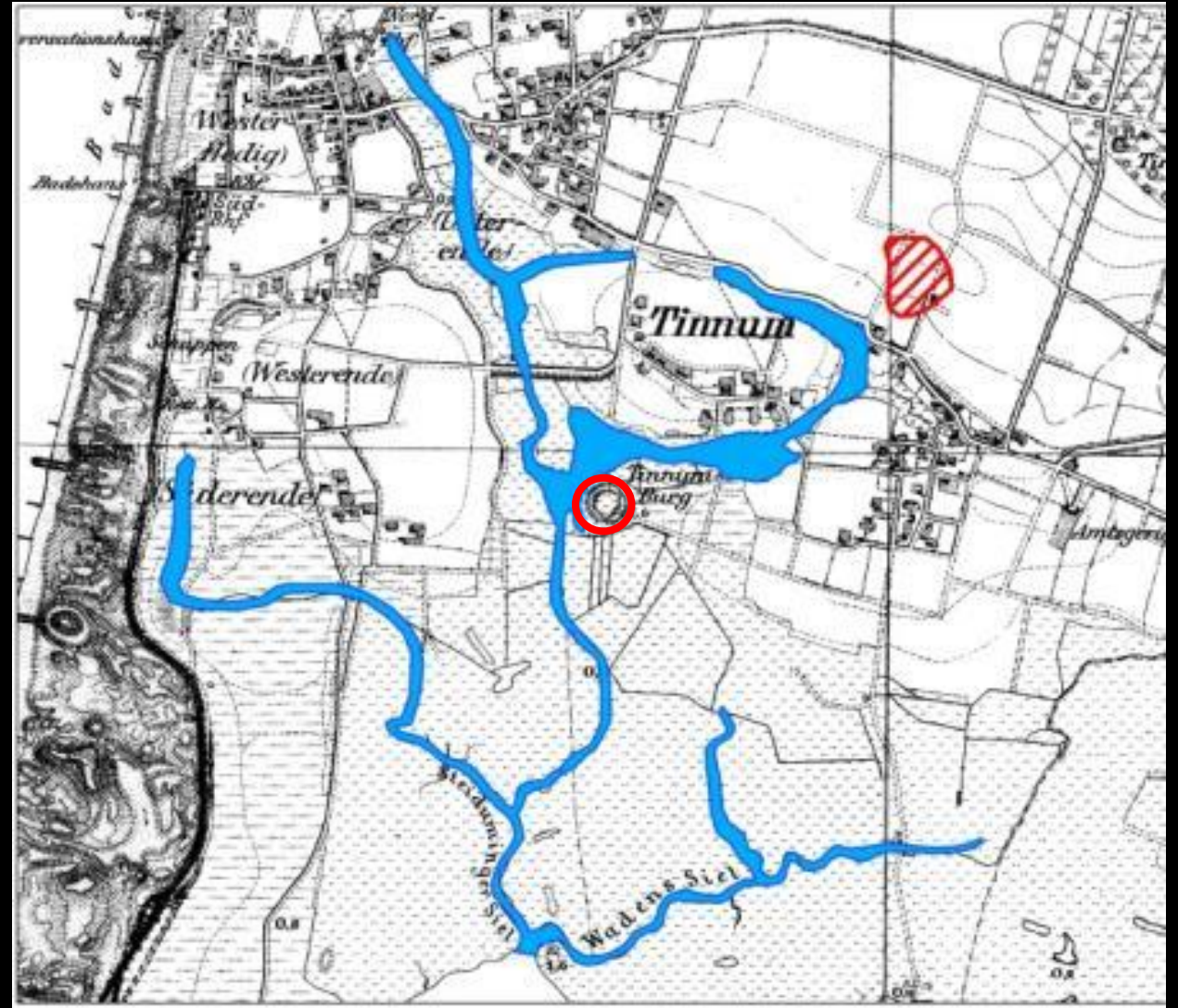
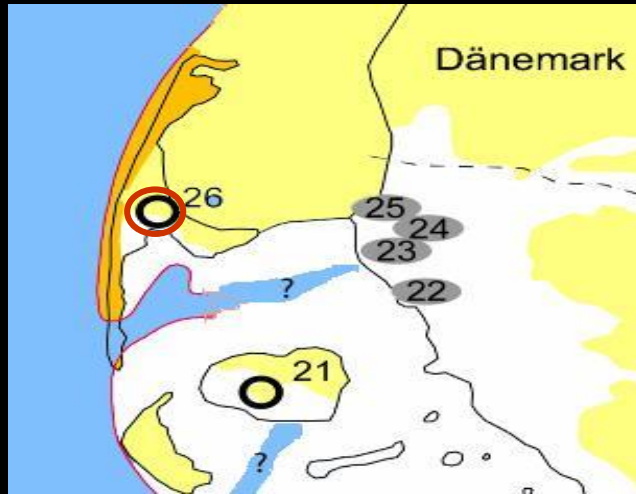


Der Galgenberg in Cuxhaven-Sahlenburg





Tinum/Sylt







7th-8th C. emporia

- Royal trading places
- Coin economy



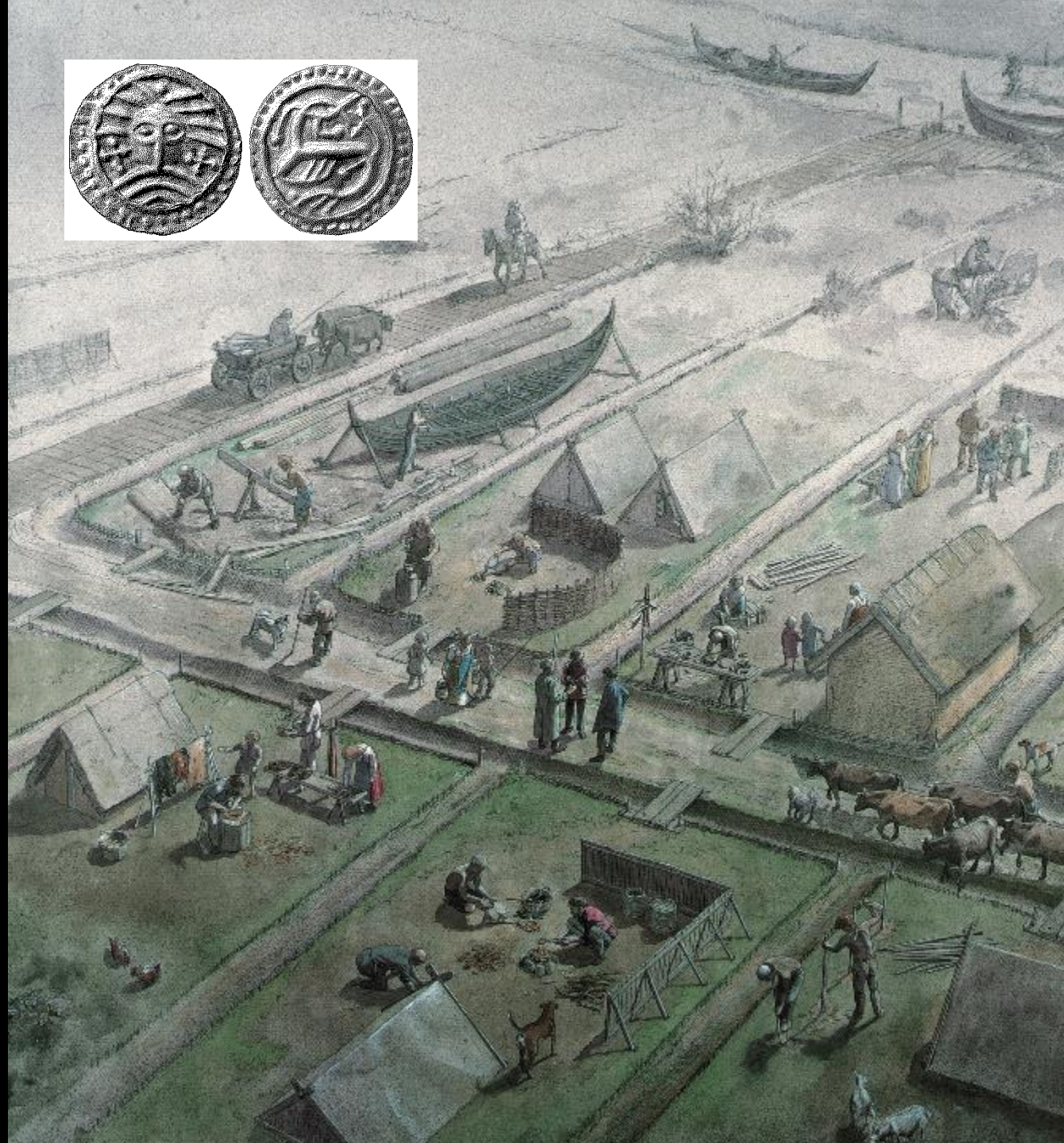
9.-10. C. emporia



From the early 8th C. Ribe was an important emporium.

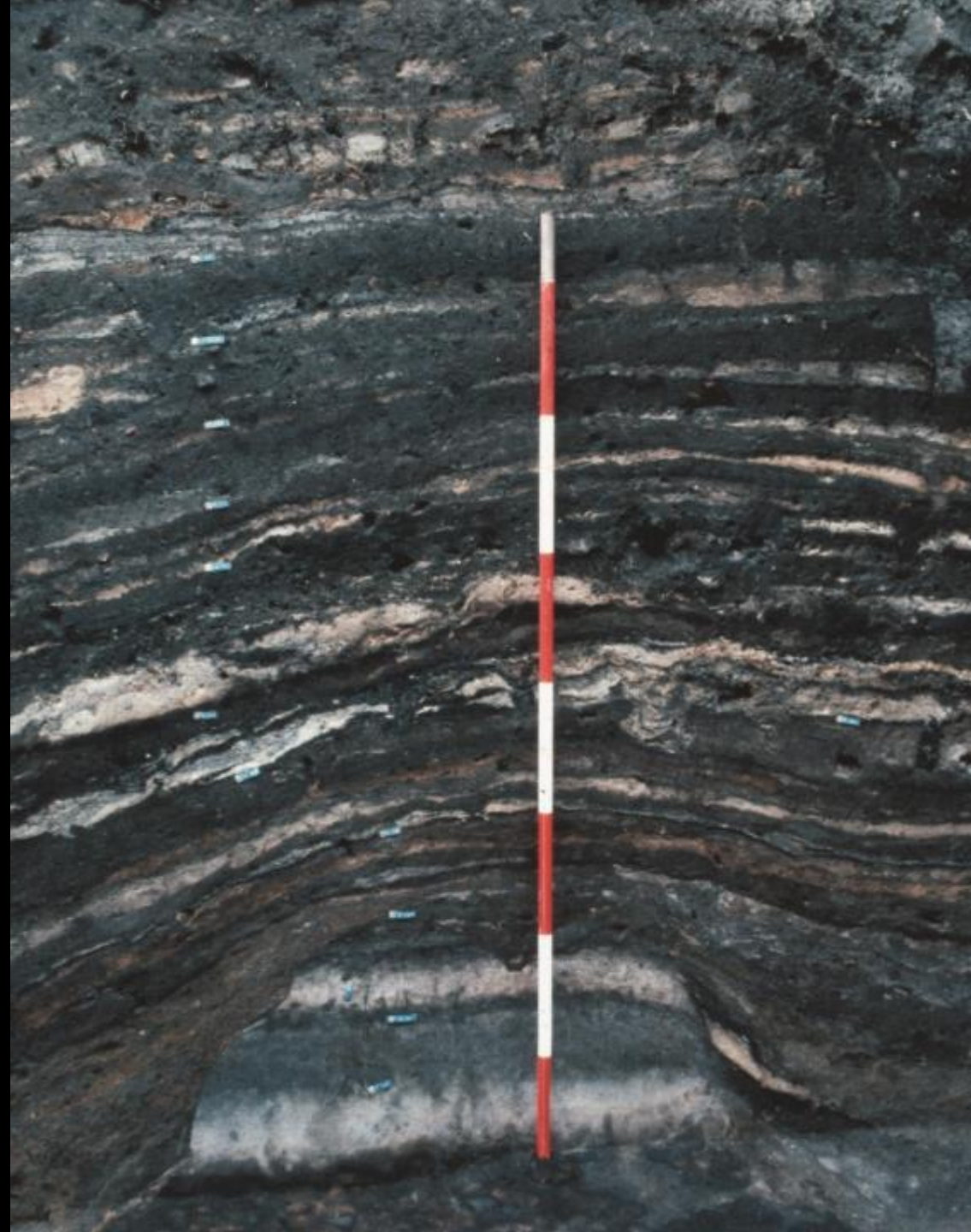
By c. 725 with a coin economy based on the wotan/monster sceatta

Ribe, Reric (Gross Strömkendorf) and Aahus were probably danish royal emporia inhabited by traders and specialized craftsmen, including glass bead makers.



Post Office excavation, ASR 9:
100 m² excavated.

Total number of finds: **64.765**





Imported beads,
9th C.



Semi-precious
stone beads



Glass
vessels

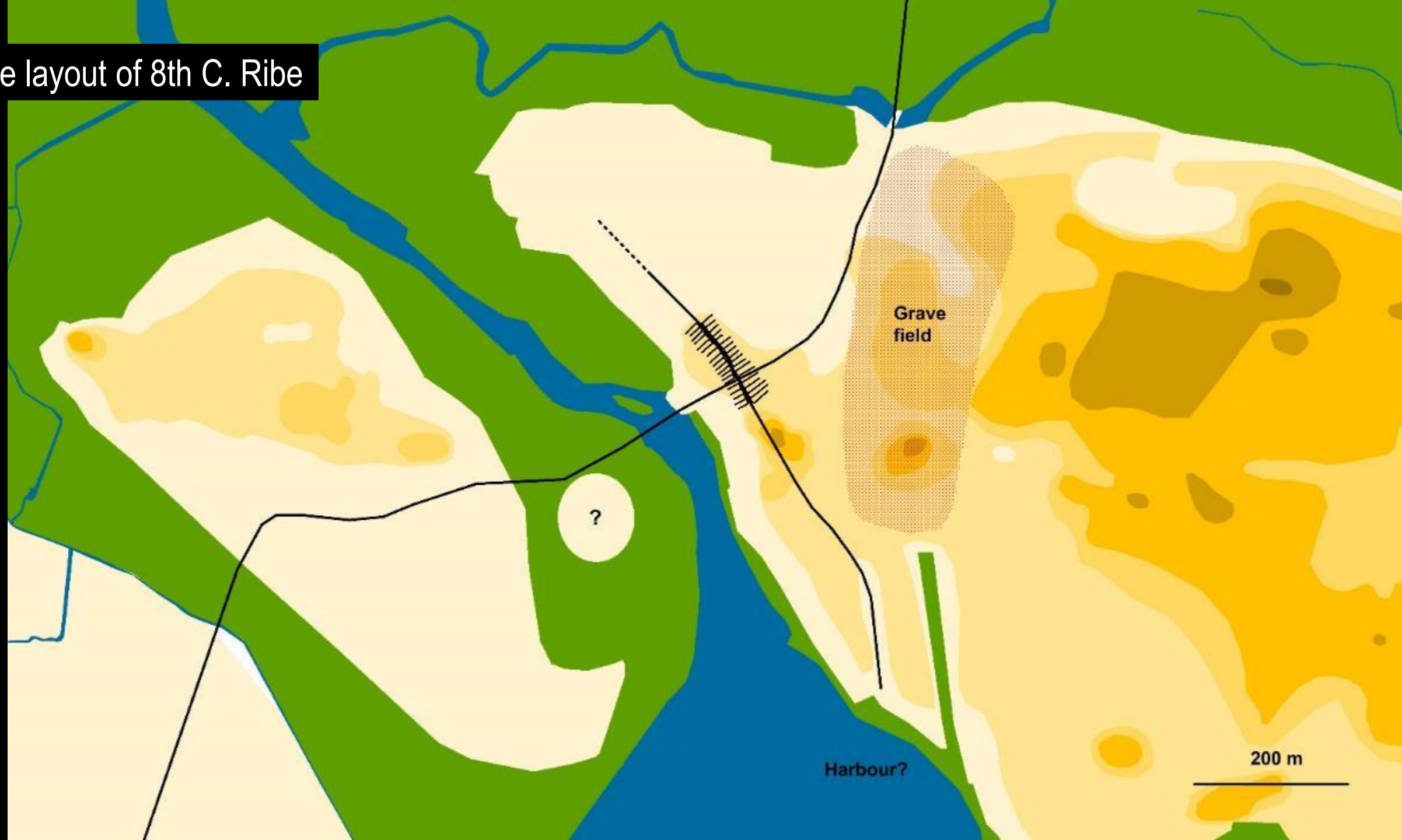


Rhenish pottery
Tating Ware,
Badorf Ware



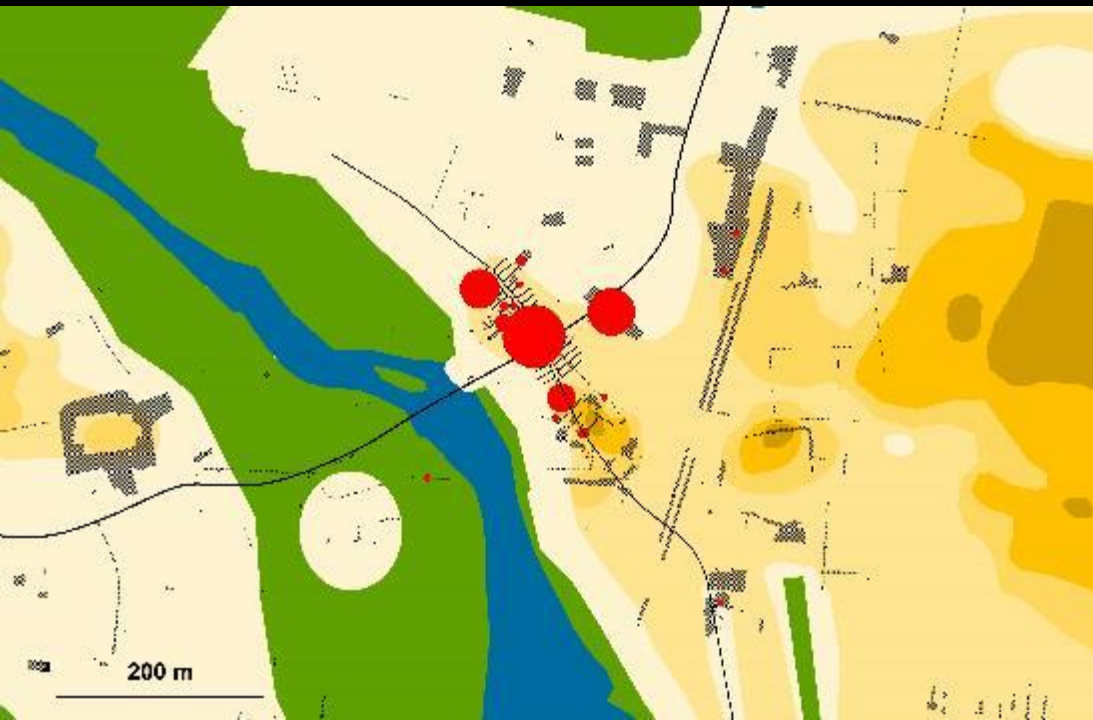
Reticella
bowls

The layout of 8th C. Ribe



The wodan/monster
sceatta (series x)
replaced by denari-type
coin c. 800 AD.

218 sceattas from Ribe.
All single finds



Wodan/monster or
series x sceatta



Malmer KG 5/6

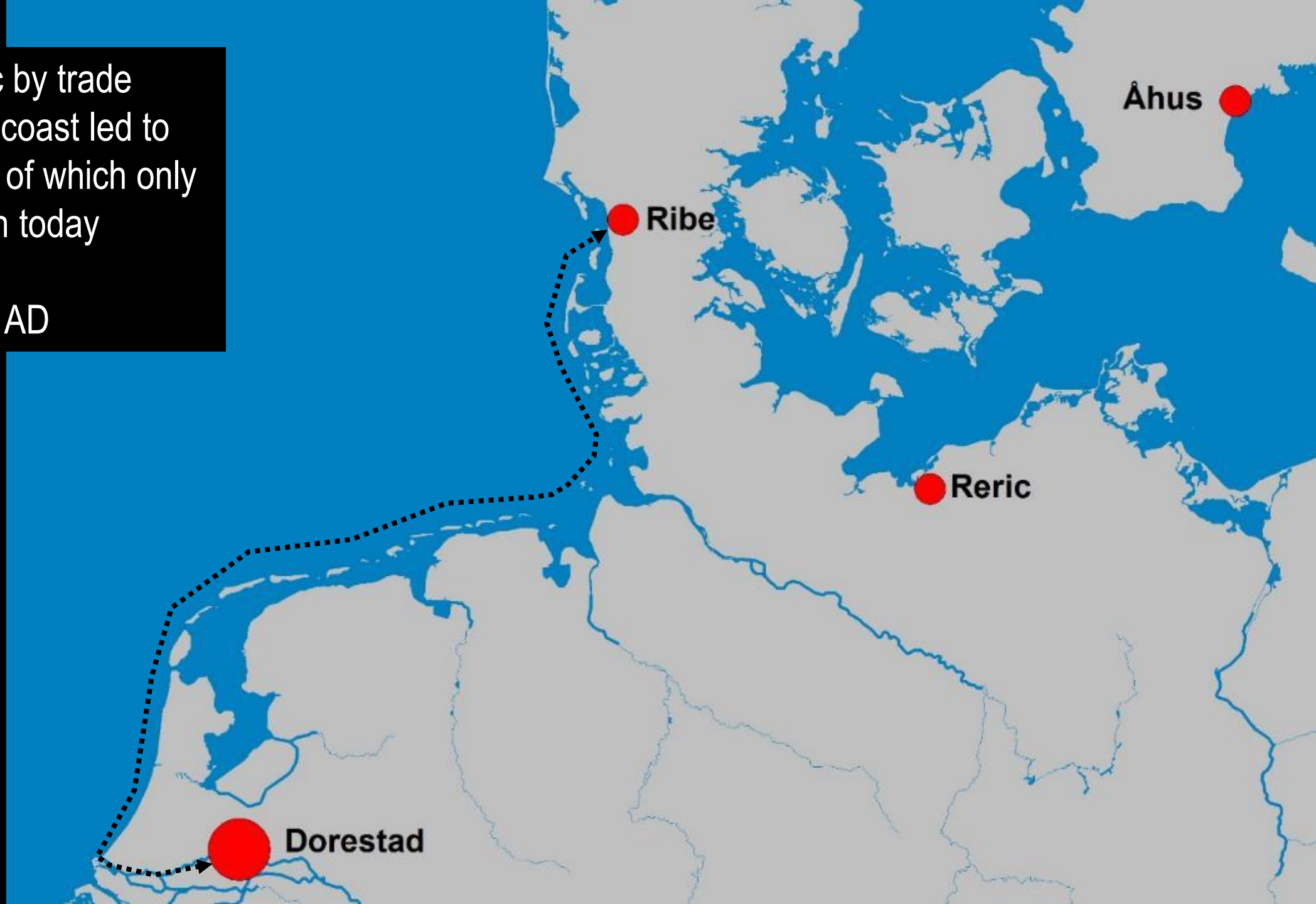


Ribe in the 9th and 10th C.



Increased traffic by trade ships along the coast led to
Many new sites of which only
a few are known today

8th-9th Century AD

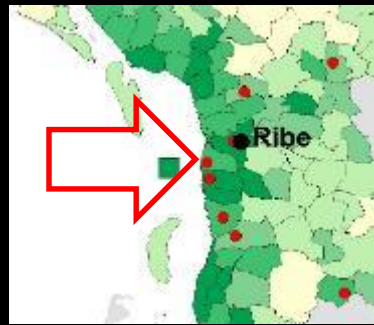


Okholm, V. Vedsted parish

Pithouses, small, non-agrarian houses
Textile production

7th-9th C.

Imports, specialized crafts, coins



Badorf ware

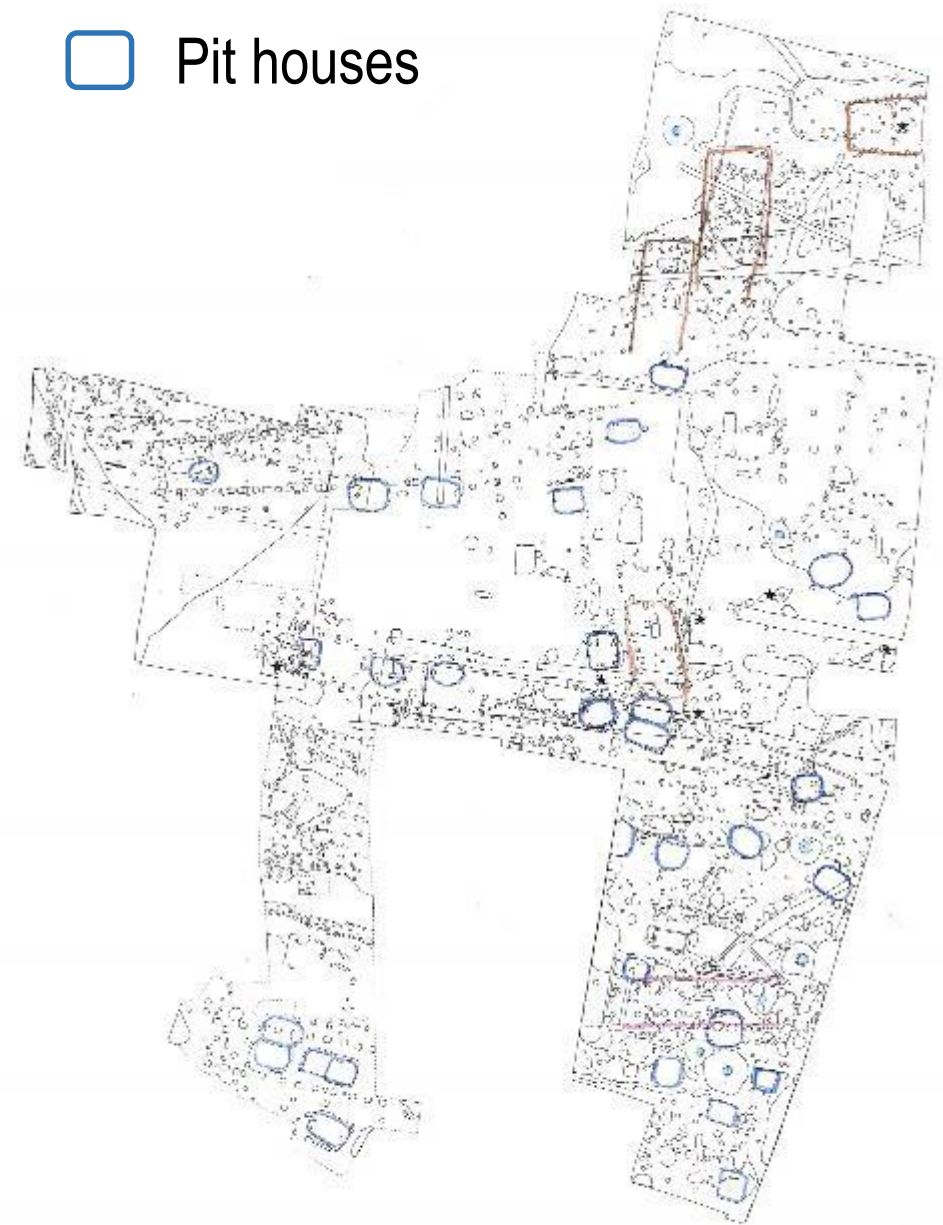


Loom weight



Glass bead production

 Pit houses



Possible Contributions:

(1) to further the integration of the cultural and natural landscape heritage of the Wadden Sea Region in terms of research and management:

- Interdisciplinary research to understand the dramatic landscape changes in order to predict future developments**

(2) to further developing public awareness and relevant common policy and management approaches:

- Integrate heritage management into the relevant National Park Authorities, display exhibitions on cultural history in National Park Information Centers**